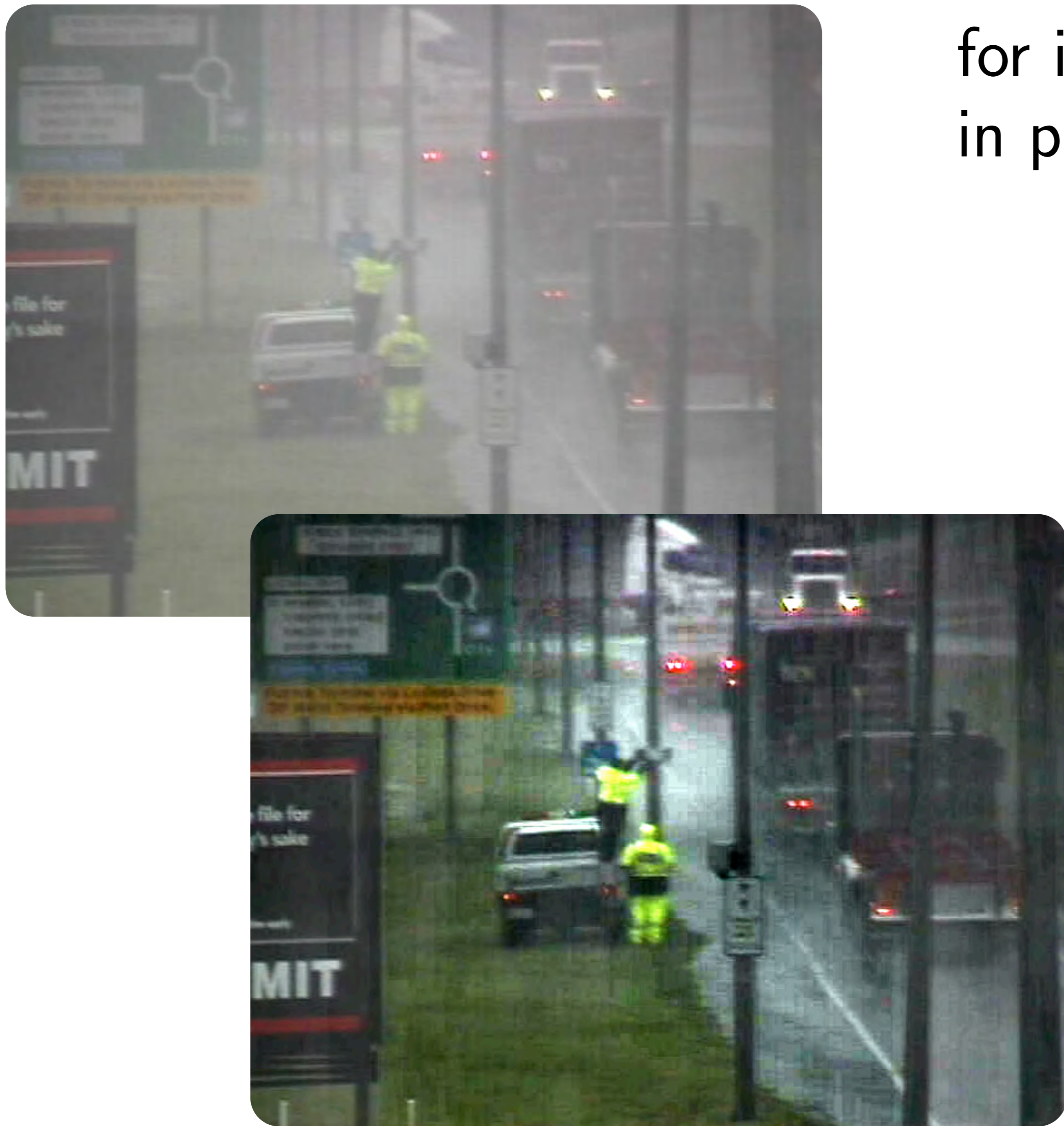


Peter Carr and Richard Hartley
peter.carr@nicta.com.au
+61 2 6267 6244

Automatic enhancement of images and video for improved security and surveillance monitoring in poor weather conditions



At a Glance

- Degradation is depth dependent
- Enhancement parameters automatically estimated from a single image
- Video corrected in real time
- Ideal for use in outdoor surveillance
- Handles compressed digital video

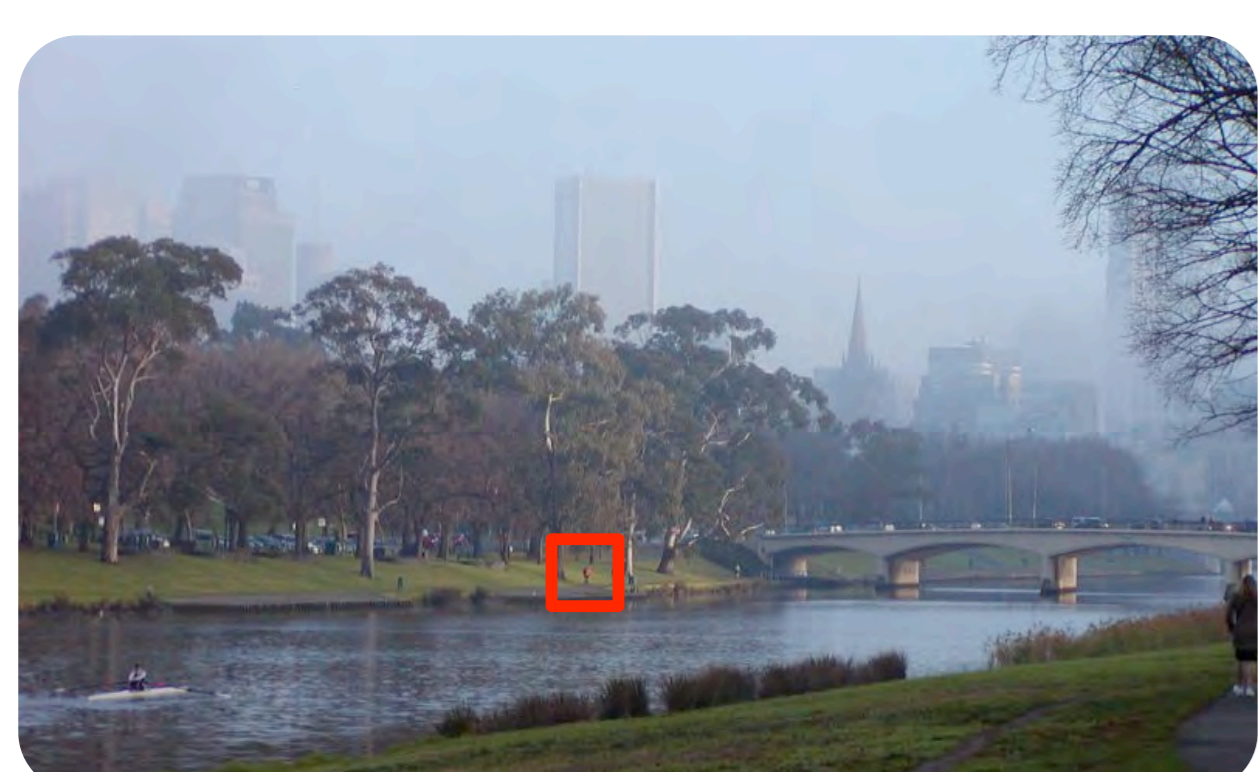
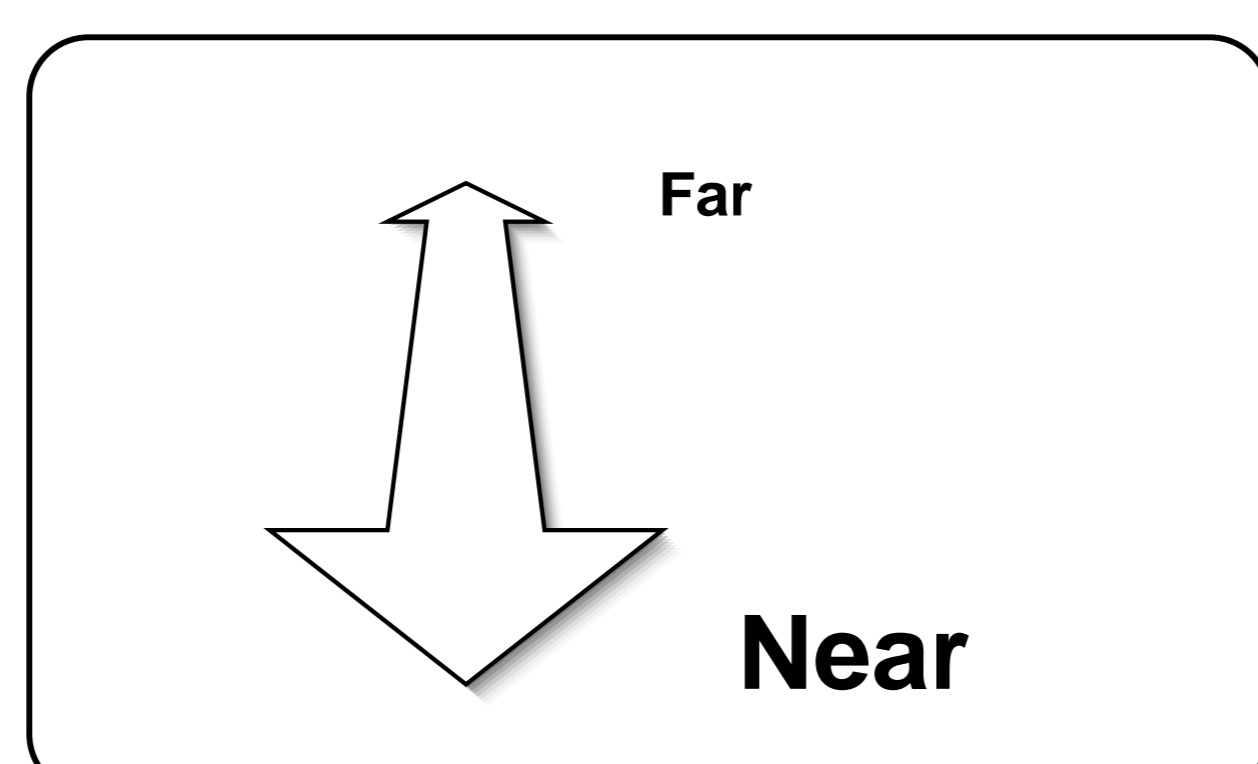
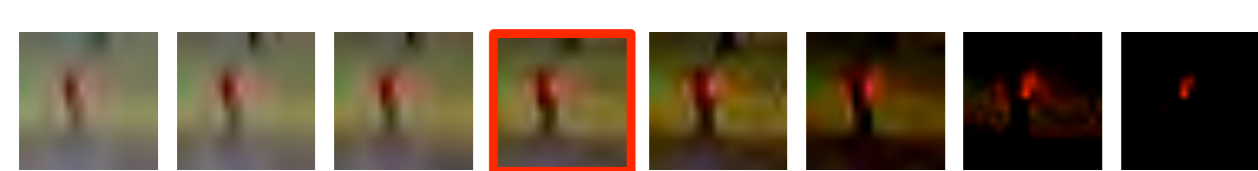
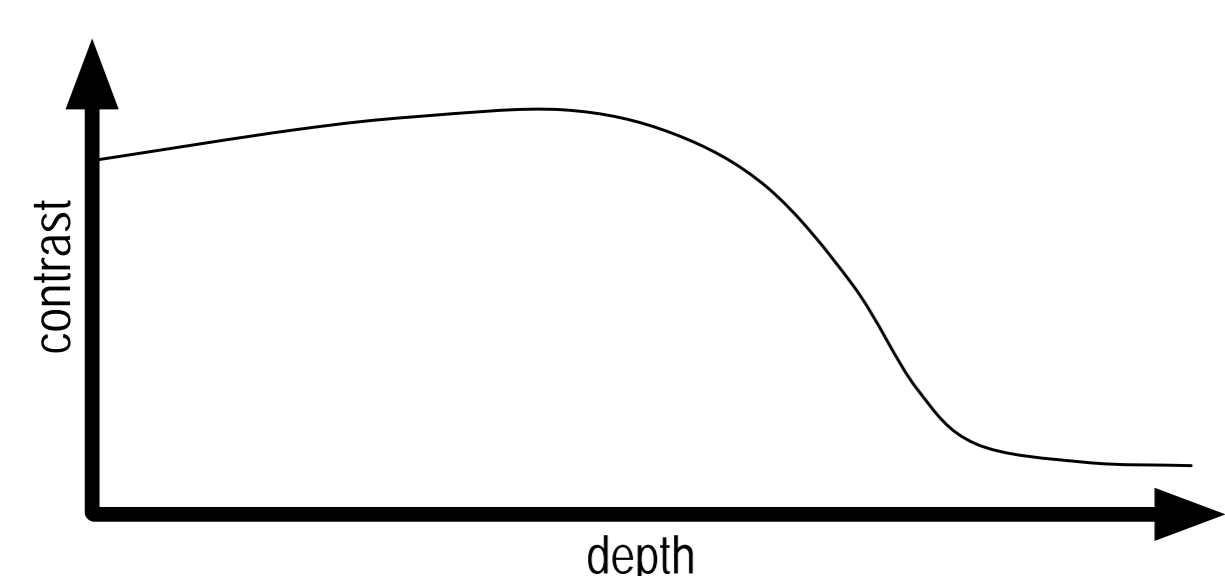


Raw Correction

Enhanced Correction

What's Under the Hood

- Depths should:
 - maximize local contrast
 - be similar to neighbouring values
 - increase from bottom to top



- Estimate in “coarse to fine” precision to make best use of available processing time

Looking Ahead

- Patent application filed
- Prototype in progress
- Looking for:
 - licensing opportunities
 - aid in refining technology